

Bill Doyle
President & CEO

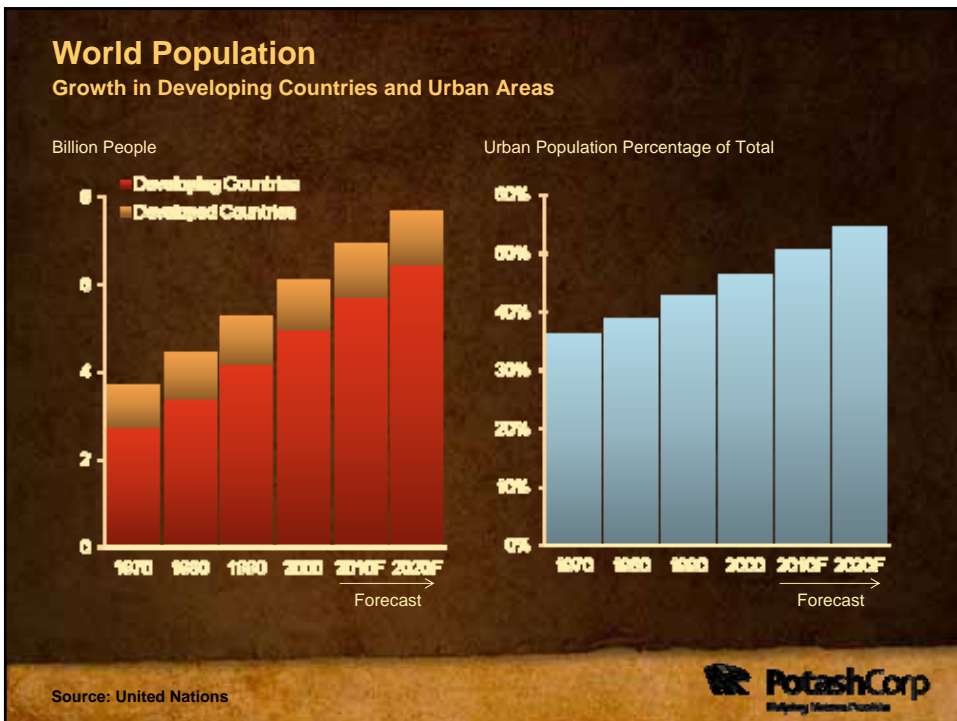
Feeding a Hungry World

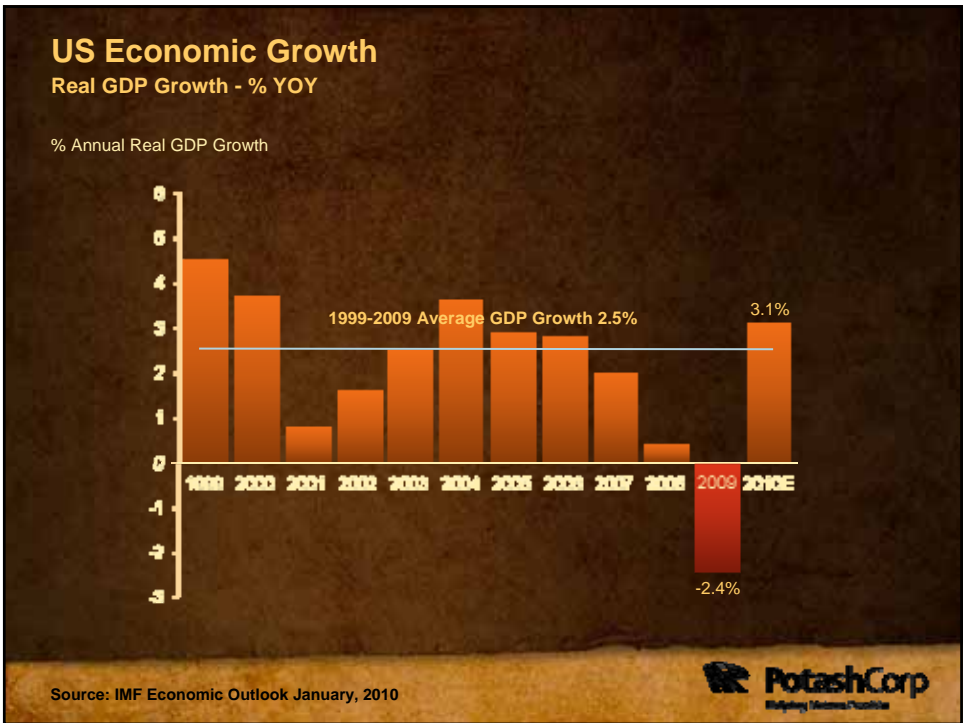
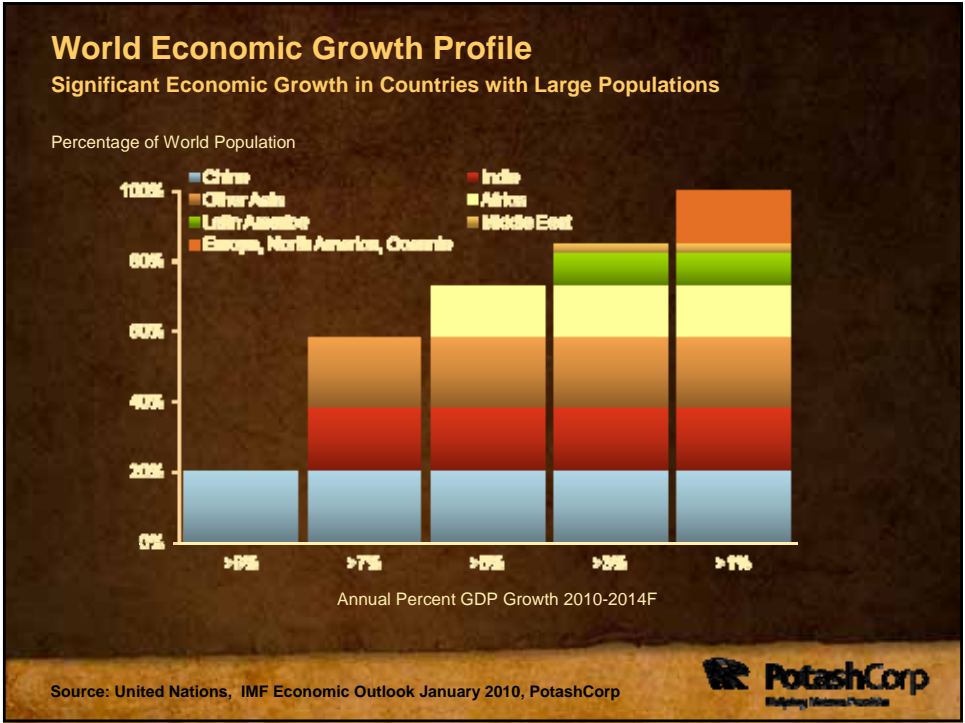
June 15, 2010

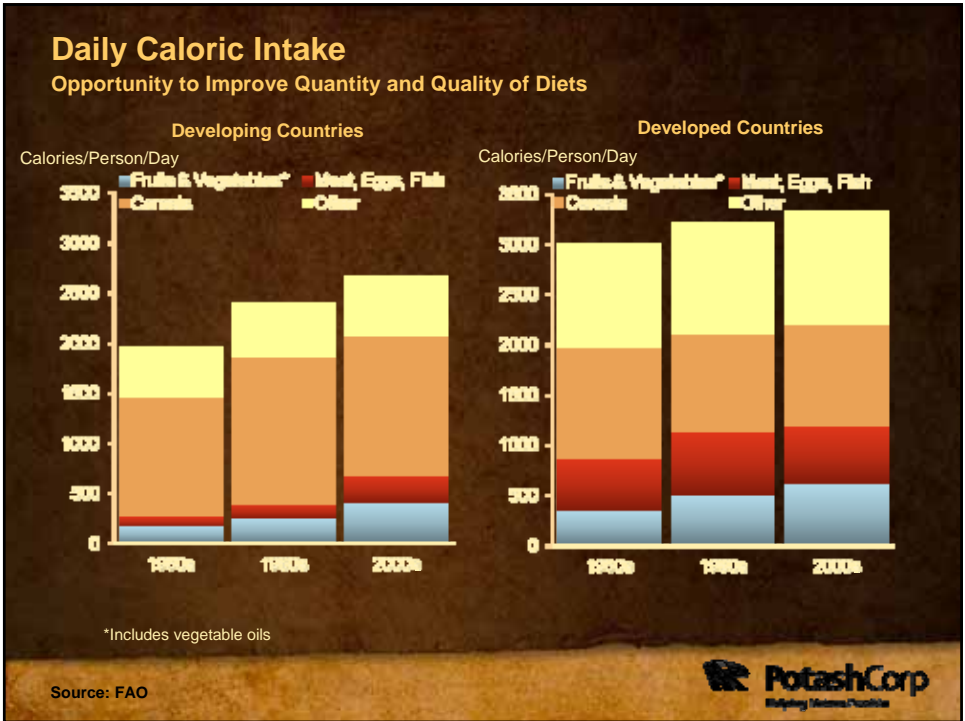
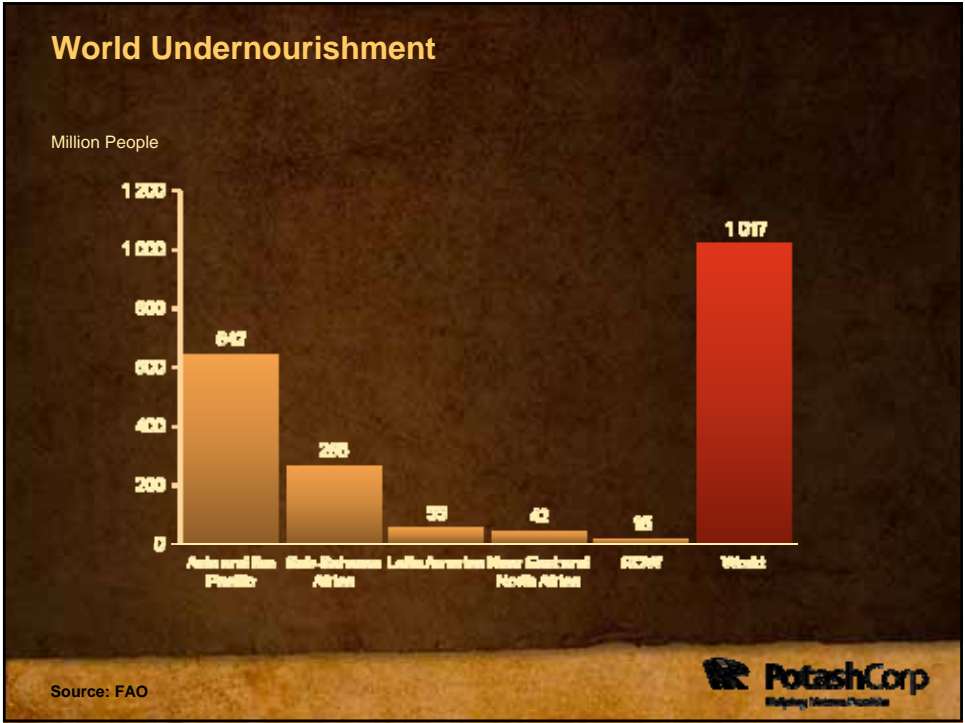
 **PotashCorp**
PotashCorp.com

Forward-Looking Statements

The following presentation contains forward-looking statements and forward-looking information ("forward-looking statements"). Such statements are based on certain factors and assumptions including foreign exchange rates, expected growth, results of operations, performance, business prospects and opportunities and effective income tax rates. While the company considers these factors and assumptions to be reasonable based on information currently available, they may prove to be incorrect. Several factors could cause actual results to differ materially from those in the forward-looking statements, including, but not limited to: fluctuations in supply and demand in fertilizer, sulfur, transportation and petrochemical markets; changes in competitive pressures, including pricing pressures; the recent global financial crisis and conditions and changes in credit markets; the results of sales contract negotiations with China and India; timing and amount of capital expenditures; risks associated with natural gas and other hedging activities; changes in capital markets and corresponding effects on the company's investments; changes in currency and exchange rates; unexpected geological or environmental conditions, including water inflow; strikes and other forms of work stoppage or slowdowns; changes in, and the effects of, government policy and regulations; and earnings, exchange rates and the decisions of taxing authorities, all of which could affect our effective tax rates. Additional risks and uncertainties can be found in our Form 10-K for the fiscal year ended December 31, 2009 under the captions "Forward-Looking Statements" and "Item 1A – Risk Factors" and in our other filings with the US Securities and Exchange Commission and Canadian provincial securities commissions. Forward-looking statements are given only as at the date of this presentation and the company disclaims any obligation to update or revise the forward-looking statements, whether as a result of new information, future events or otherwise, except as required by law.





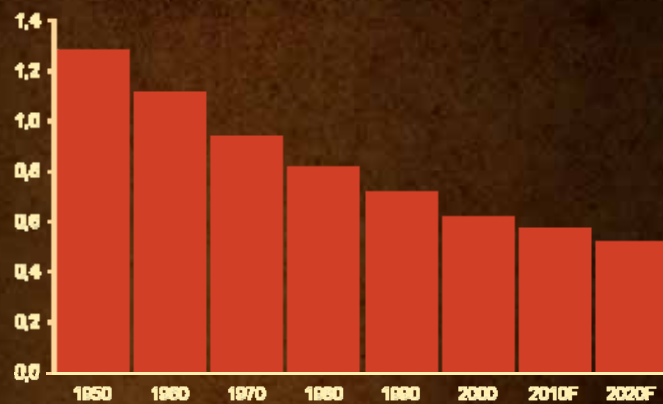




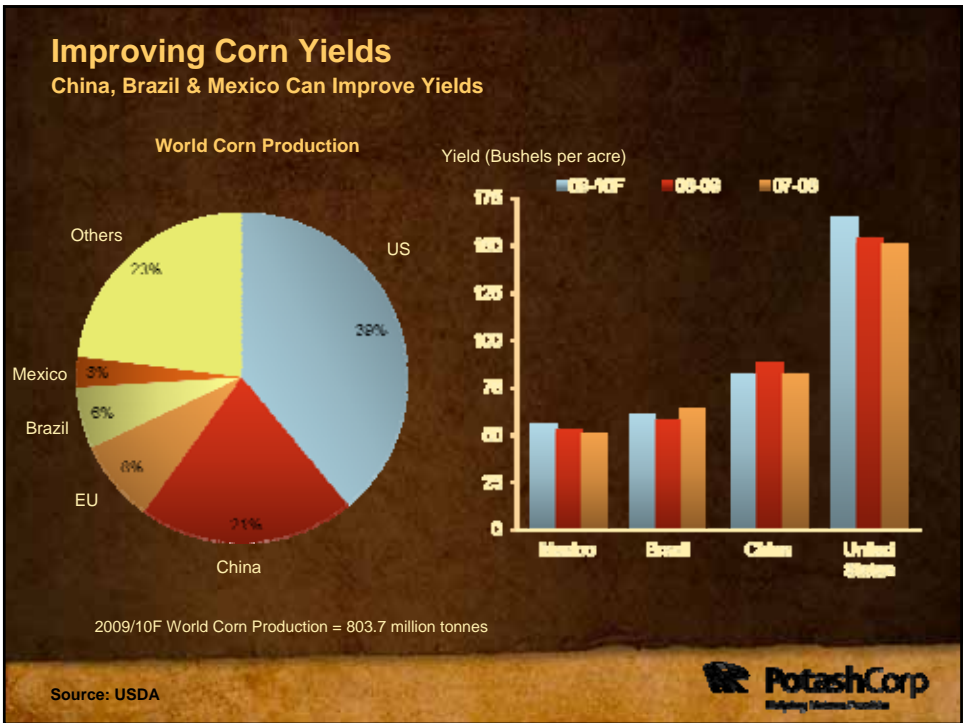
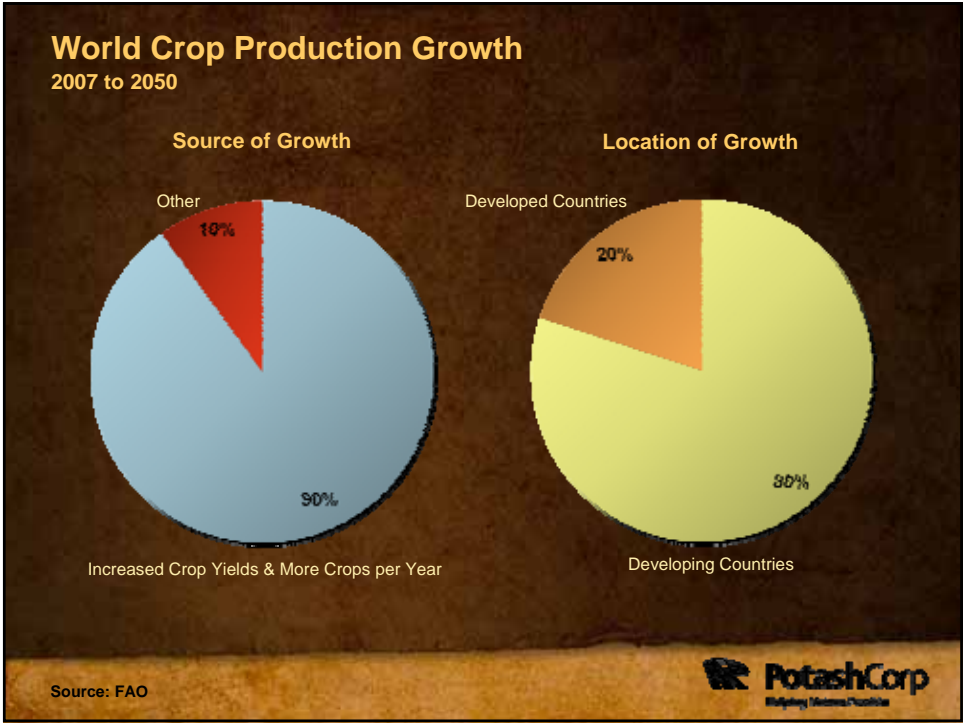
Challenge #1: Improving Yields in Developing Countries

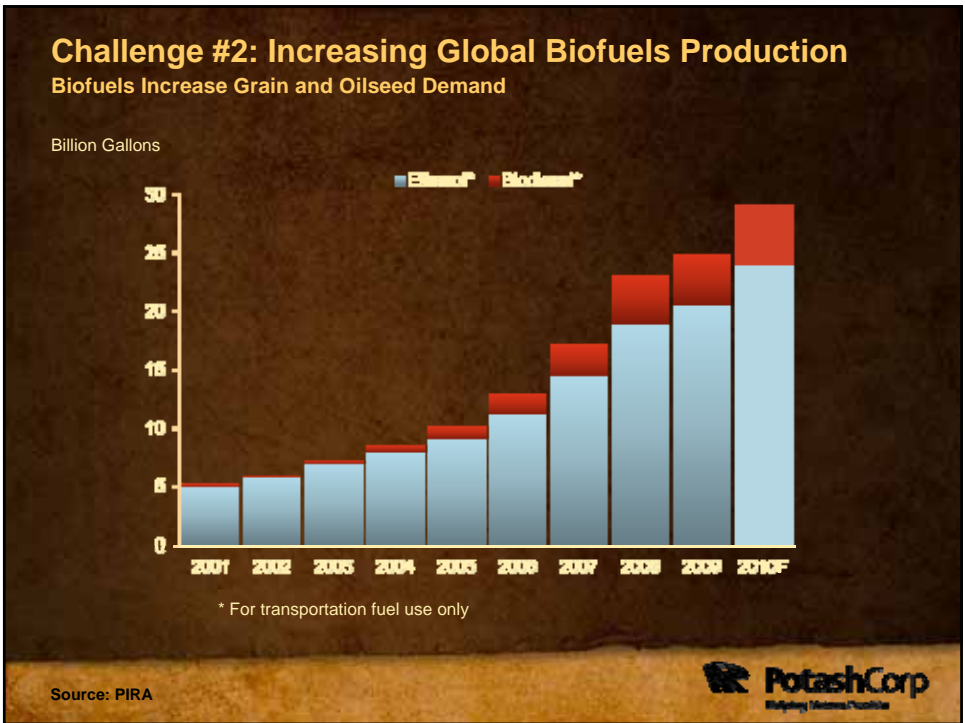
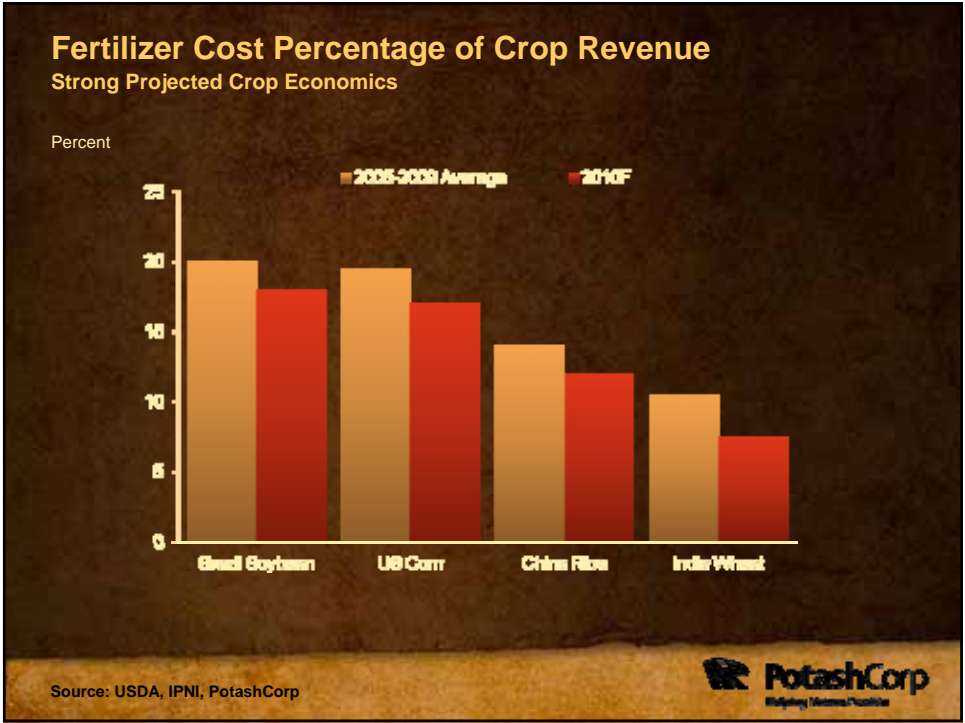
The World Has Less Land Per Person to Grow Crops

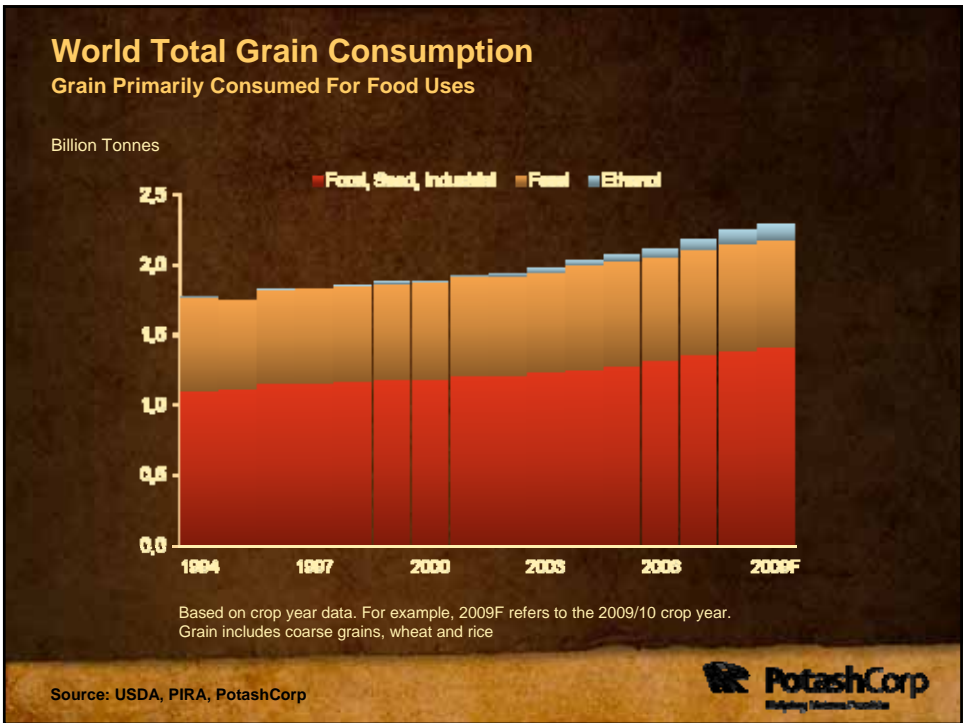
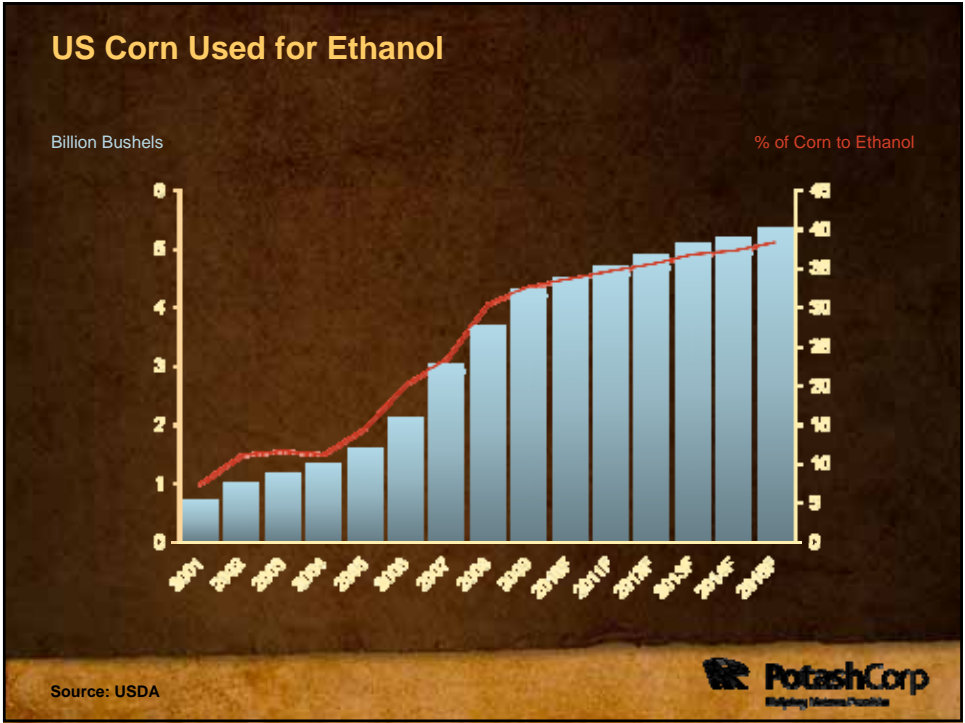
Acres of Arable Land Per Person

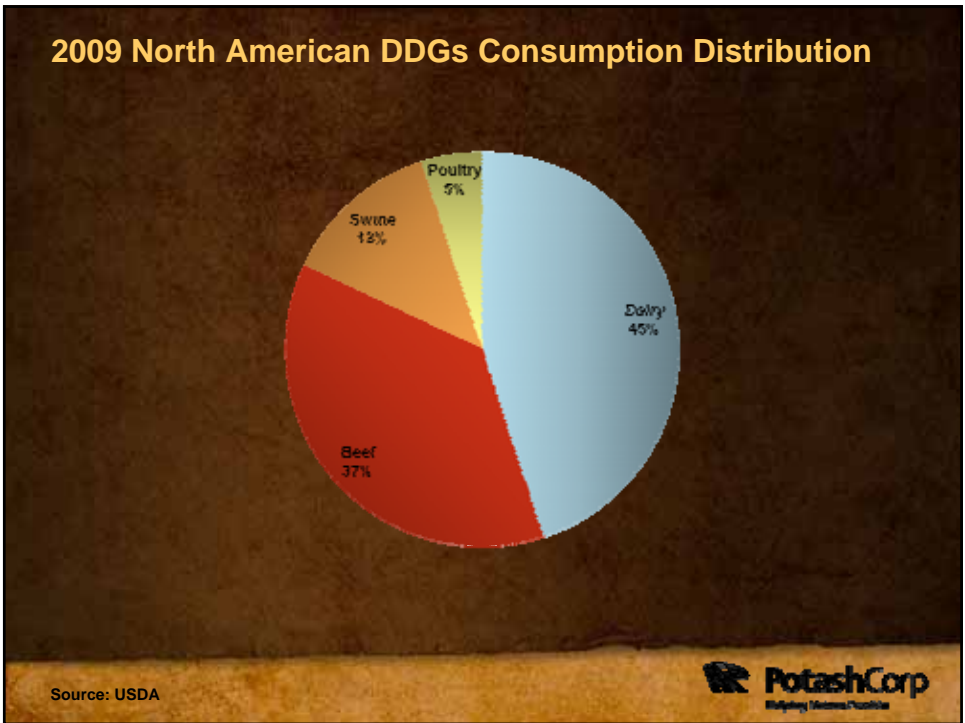
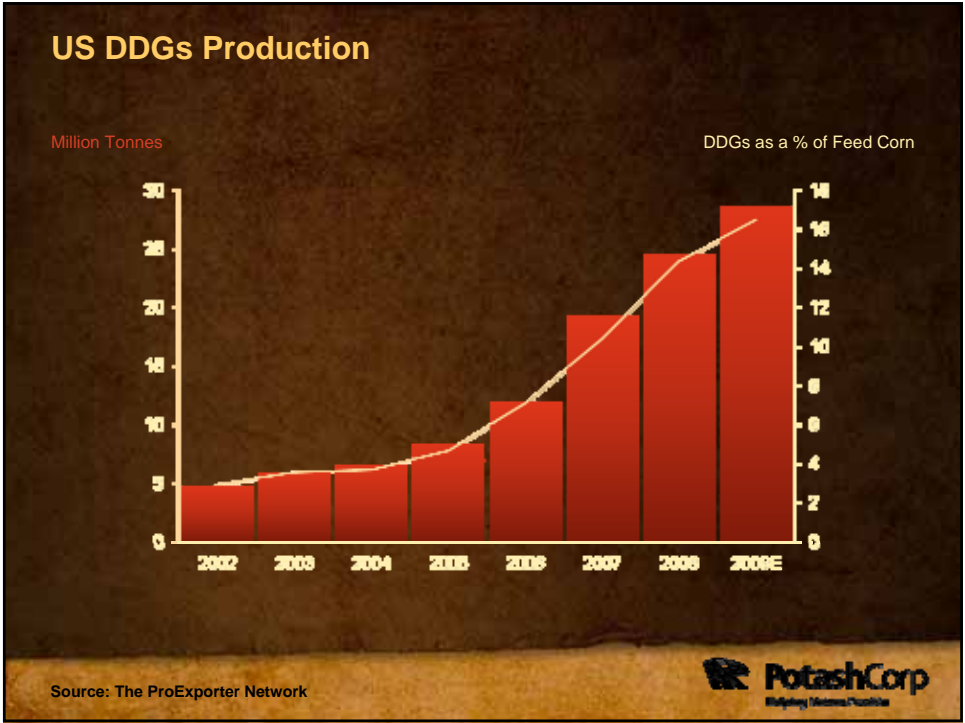


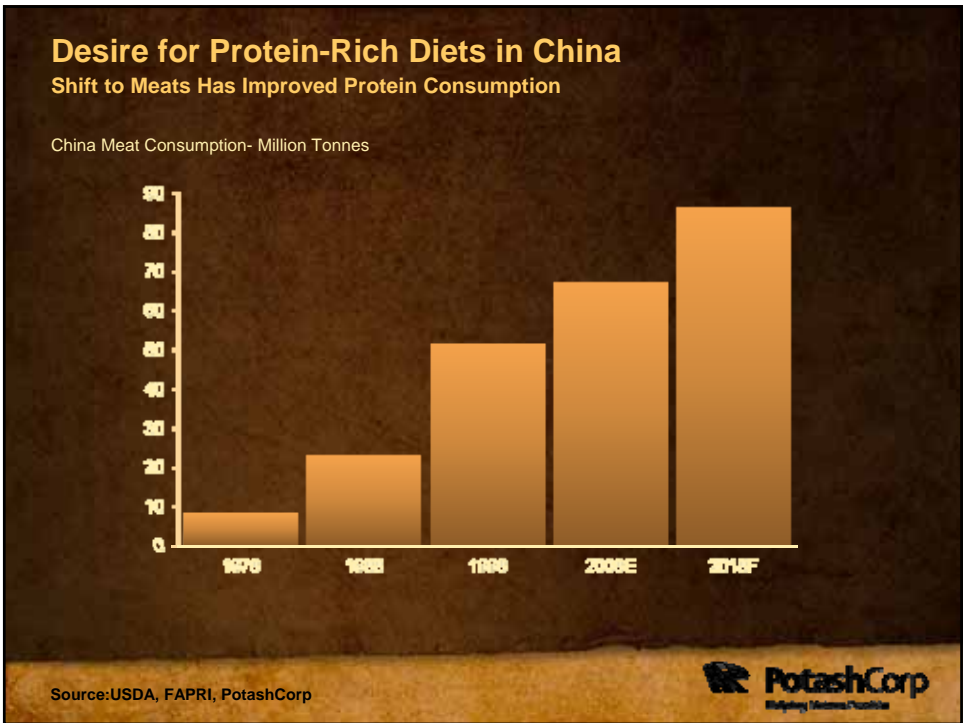
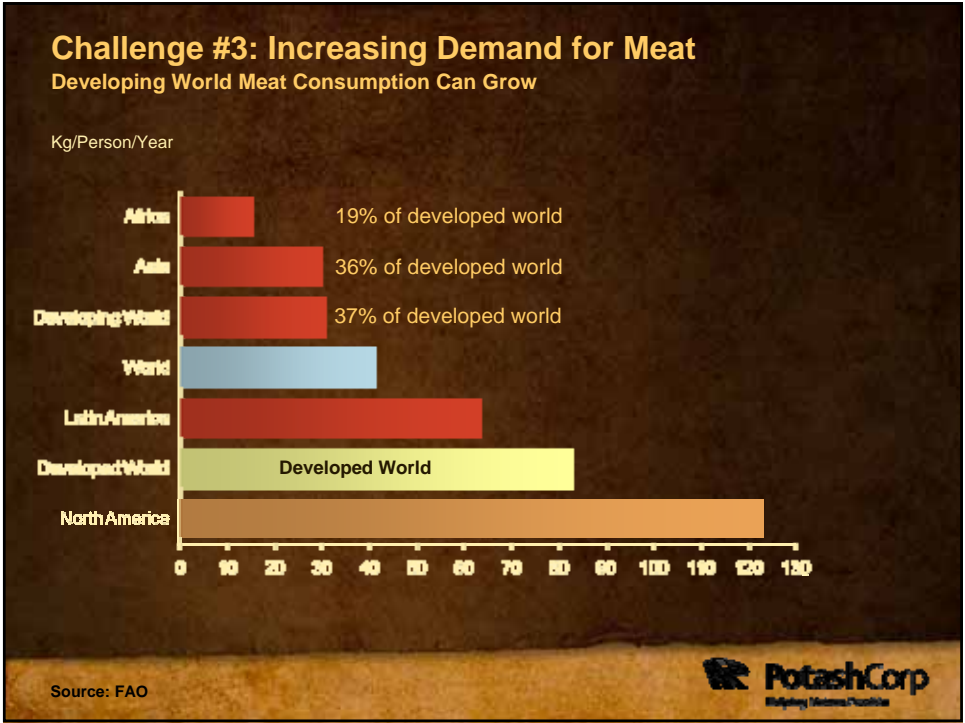
Source: FAO, United Nations, PotashCorp

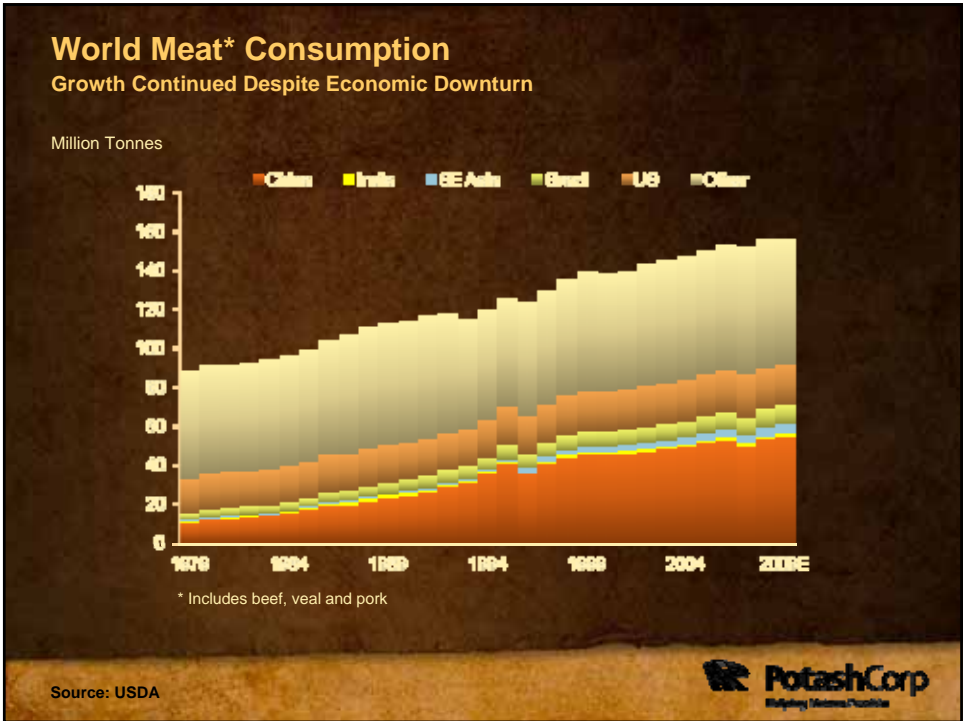
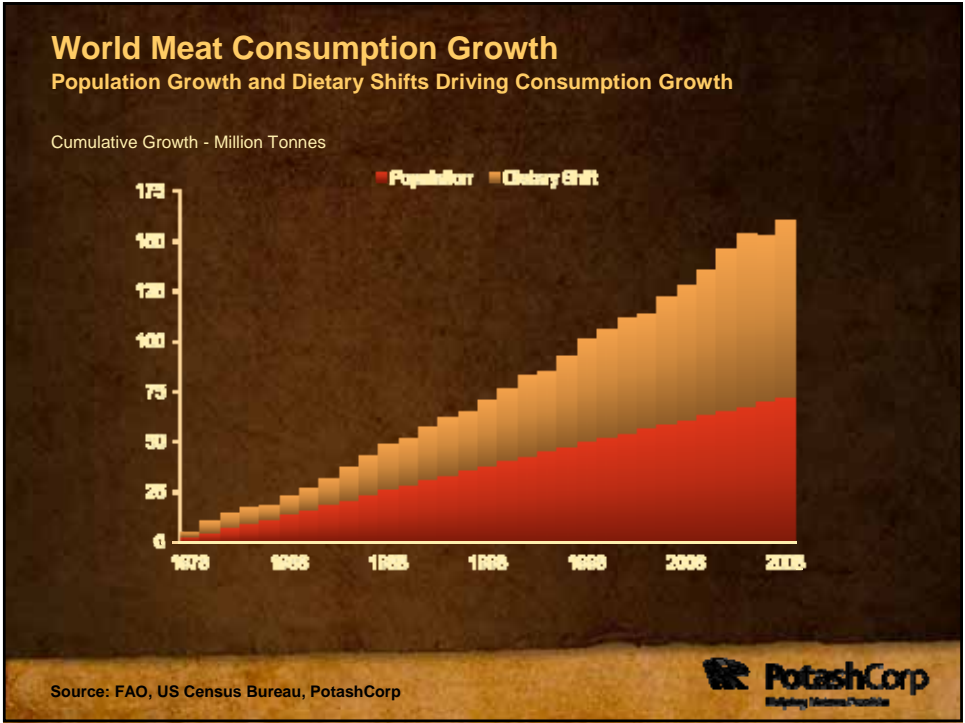


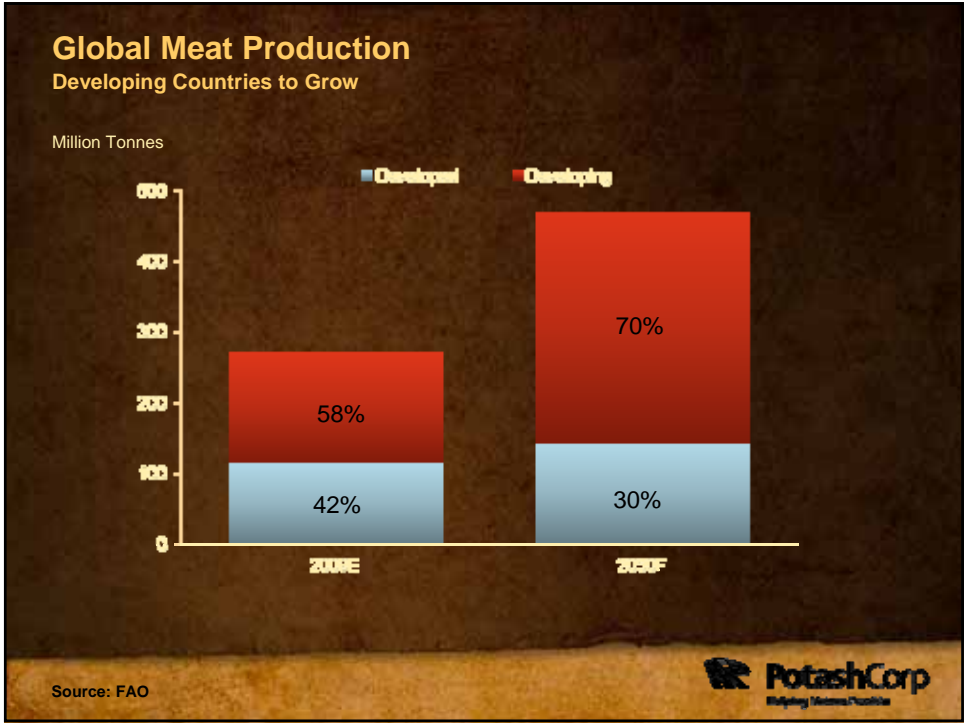


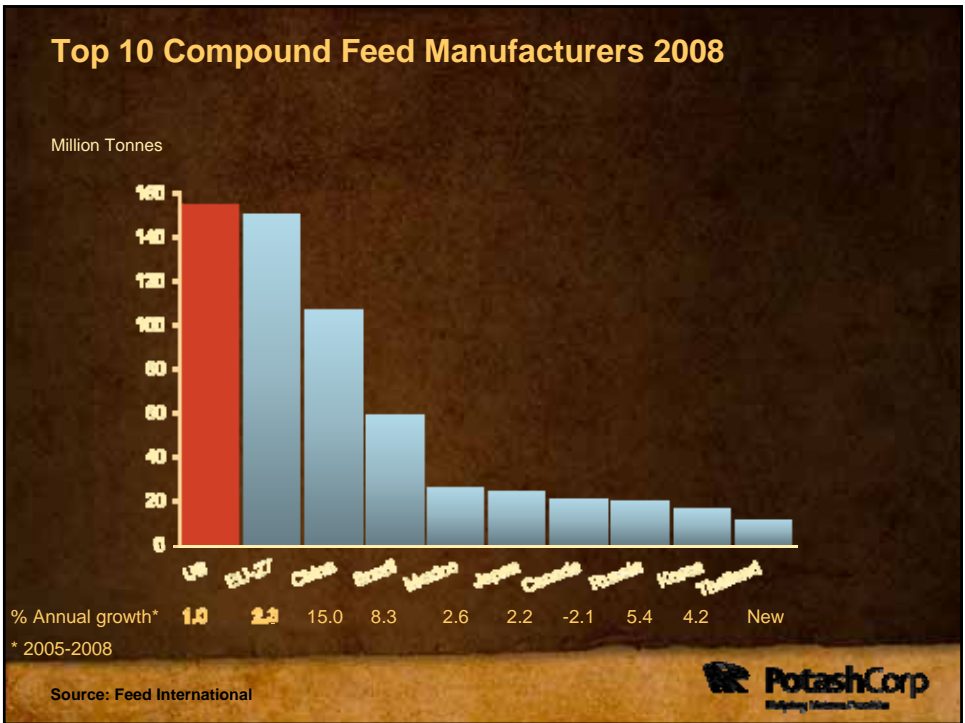
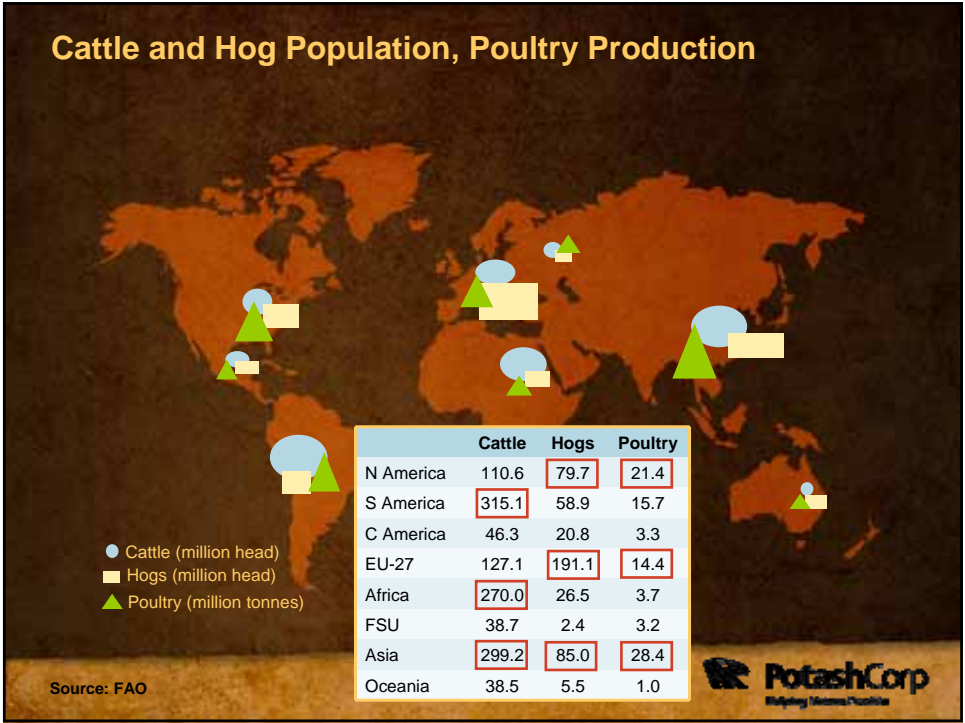


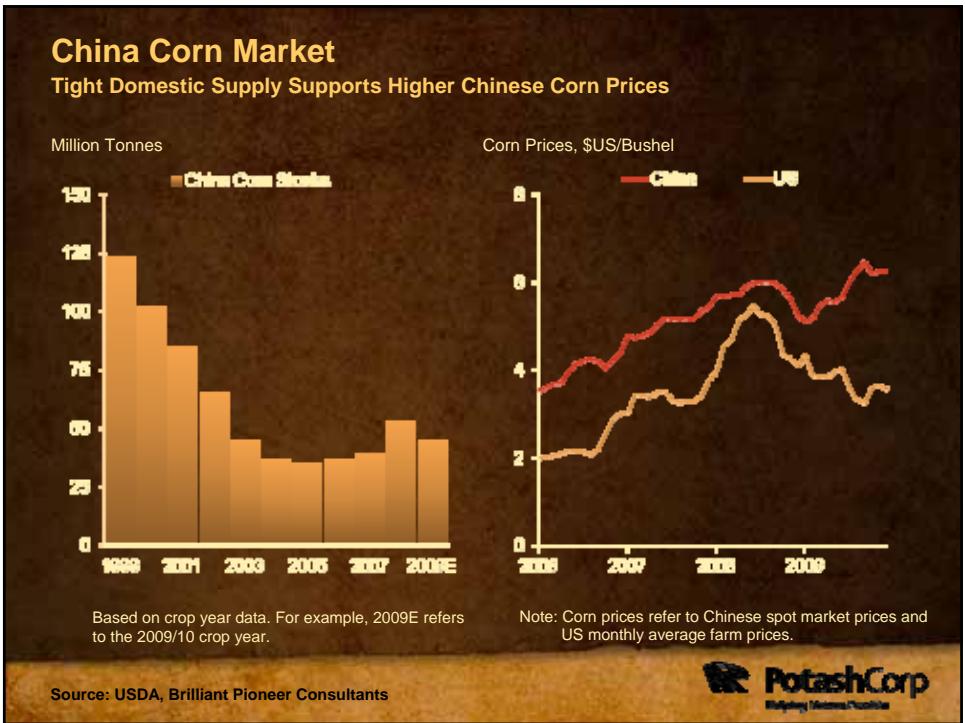
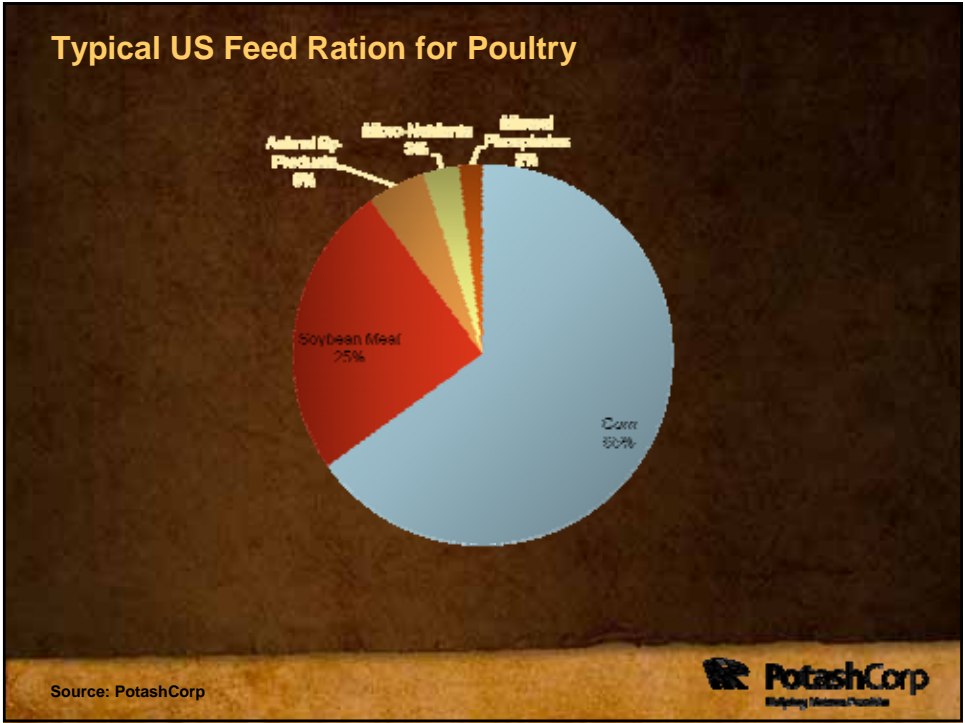












China Soybean Production and Consumption

Million Tonnes

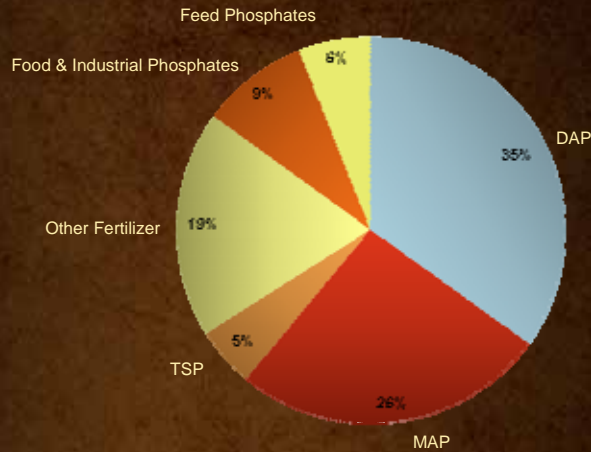


Source: USDA



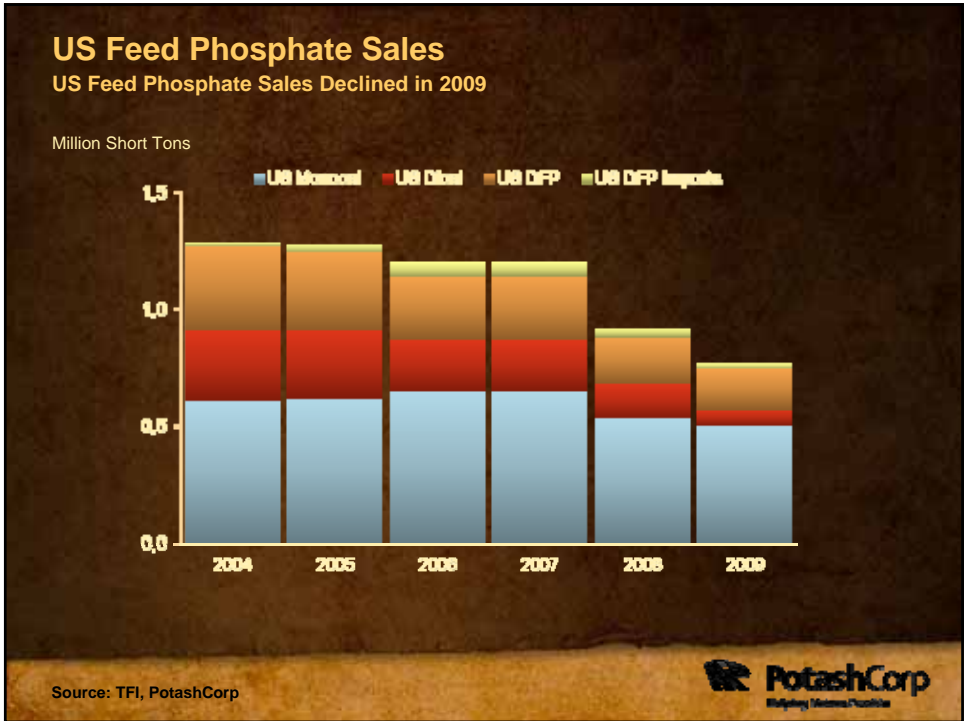
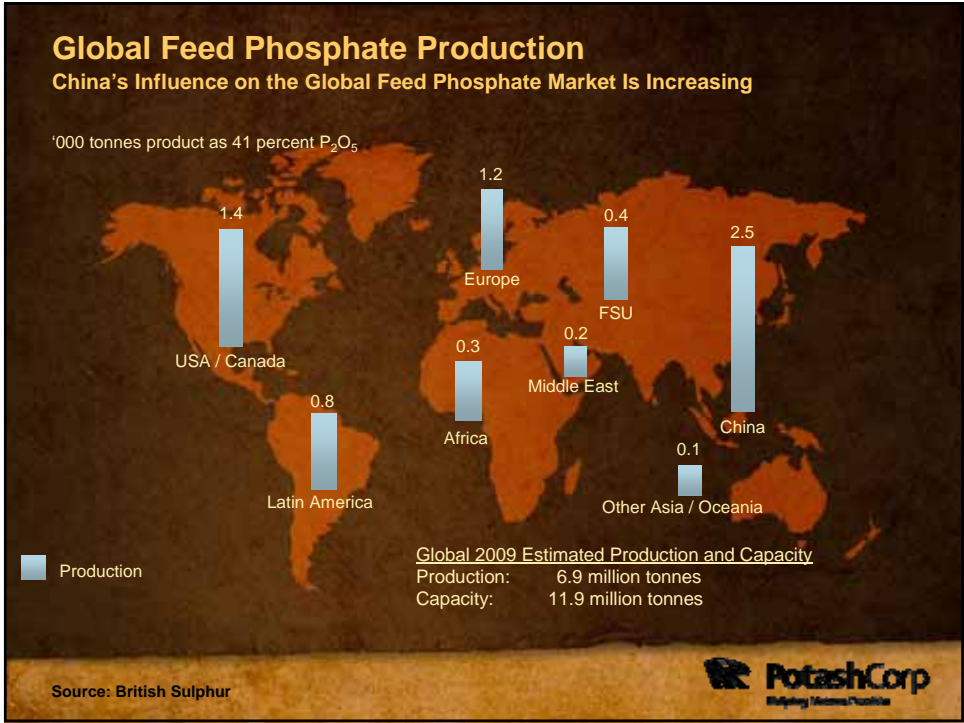
World Phosphoric Acid Uses

Most Phosphoric Acid Used in Solid Fertilizers



Source: Fertecon, British Sulphur, PotashCorp





Conclusions

- Population growth and rising incomes are driving demand for food
- Challenges may also provide opportunities:
 - Declining arable land per capita will require improved crop yields
 - Increased biofuel production creates additional pressure on grain supplies, but increases DDG production
 - Developing nations want better diets, including protein from animal sources
- FAO projections for an additional 200 million tonnes of meat production by 2050 will boost global demand for feed products



Thank You



PotashCorp.com

